

Department of Engineering
Tim Bryan, P.E., PTOE, County Engineer

3137 South Liberty Street, Canton, MS 39046
Office (601) 855-5582 FAX (601) 859-5857

MEMORANDUM

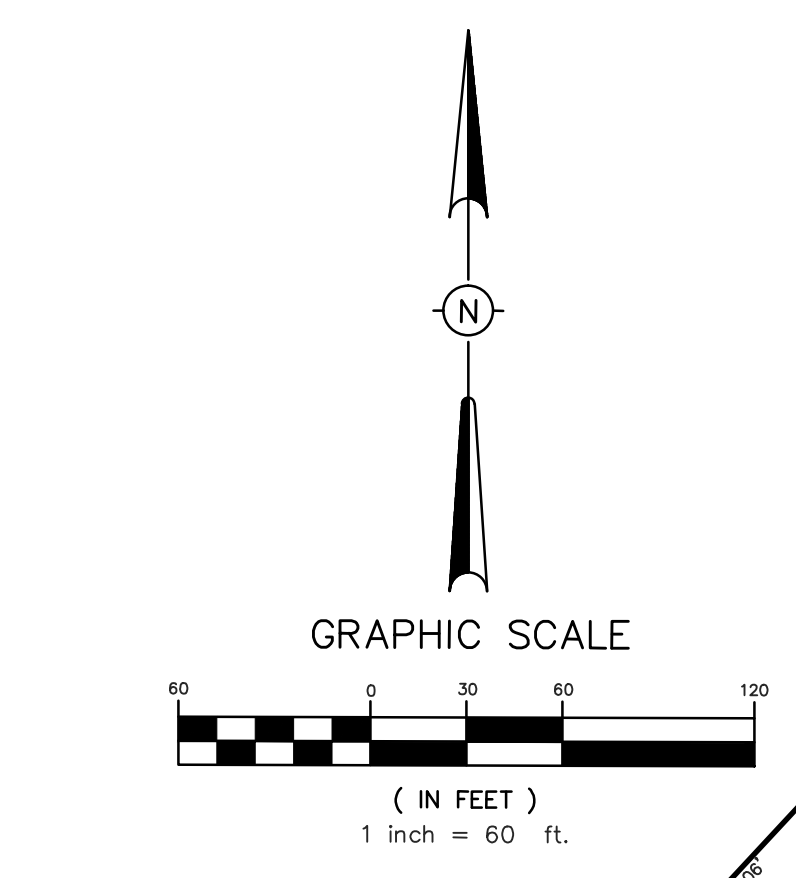
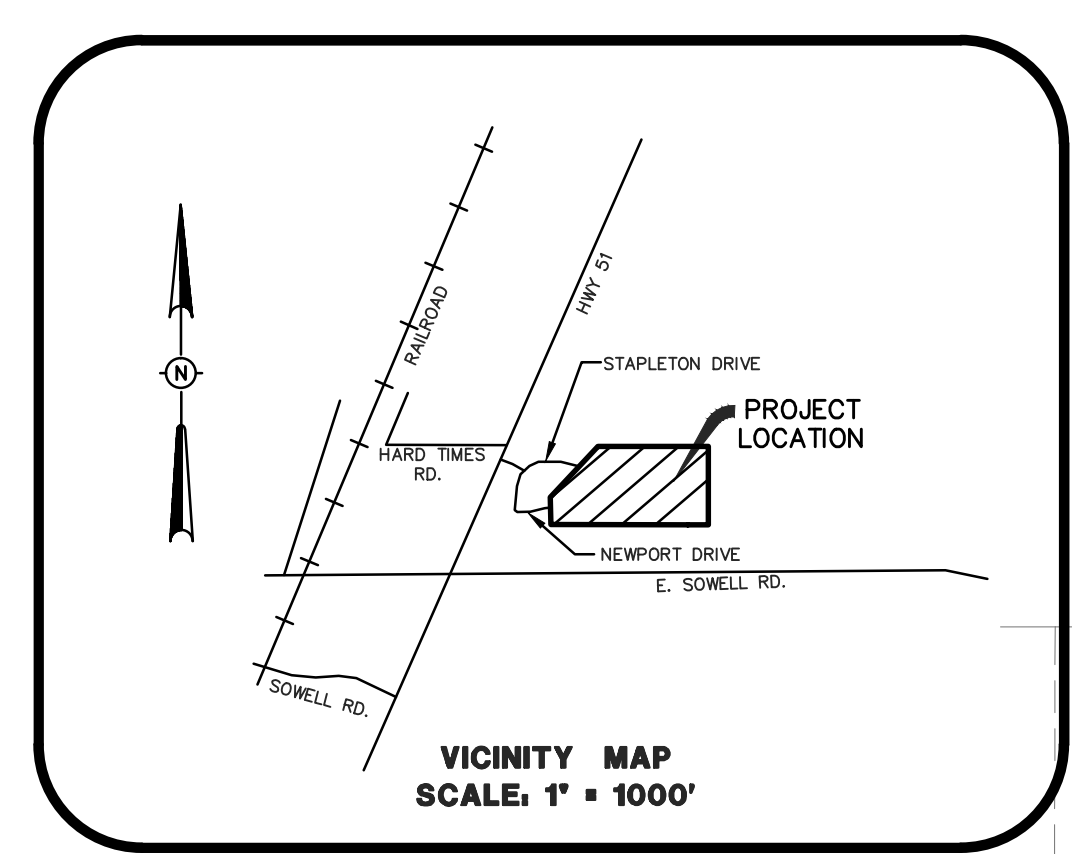
January 8, 2024

To: Casey Brannon, Supervisor, District I
Trey Baxter, Supervisor, District II
Gerald Steen, Supervisor, District III
Karl Banks, Supervisor, District IV
Paul Griffin, Supervisor, District V

From: Tim Bryan, P.E., PTOE
County Engineer

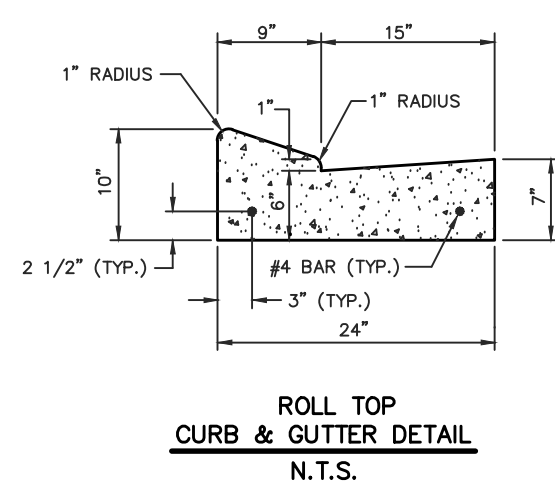
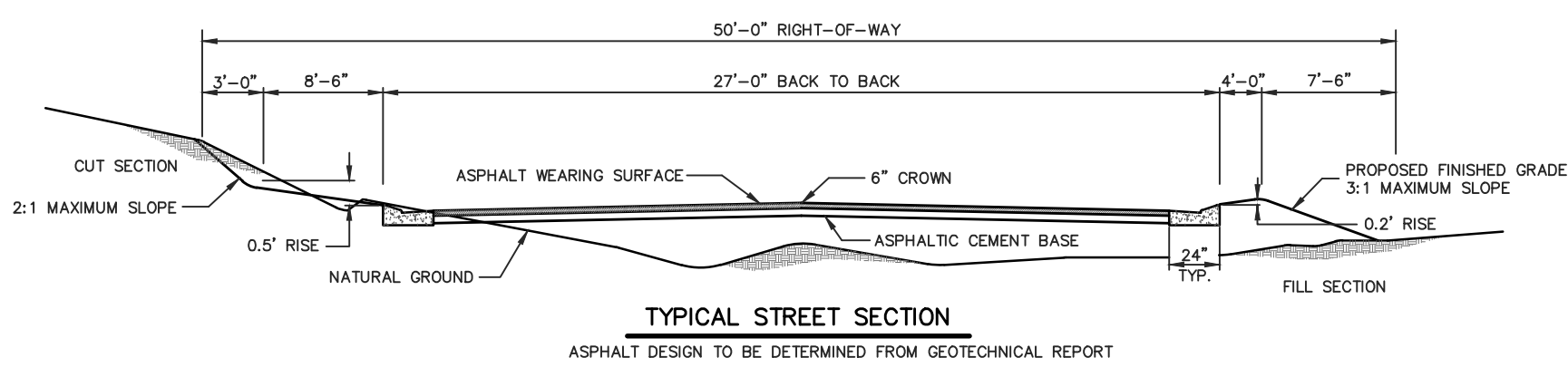
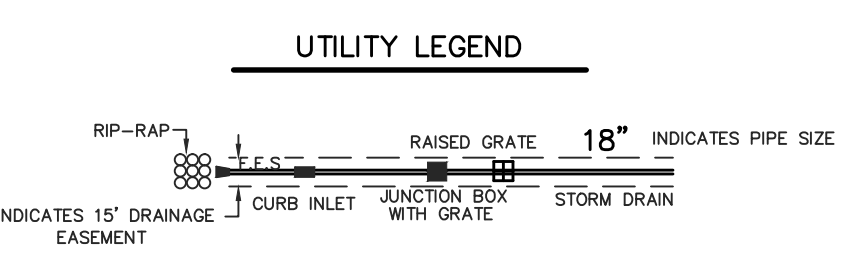
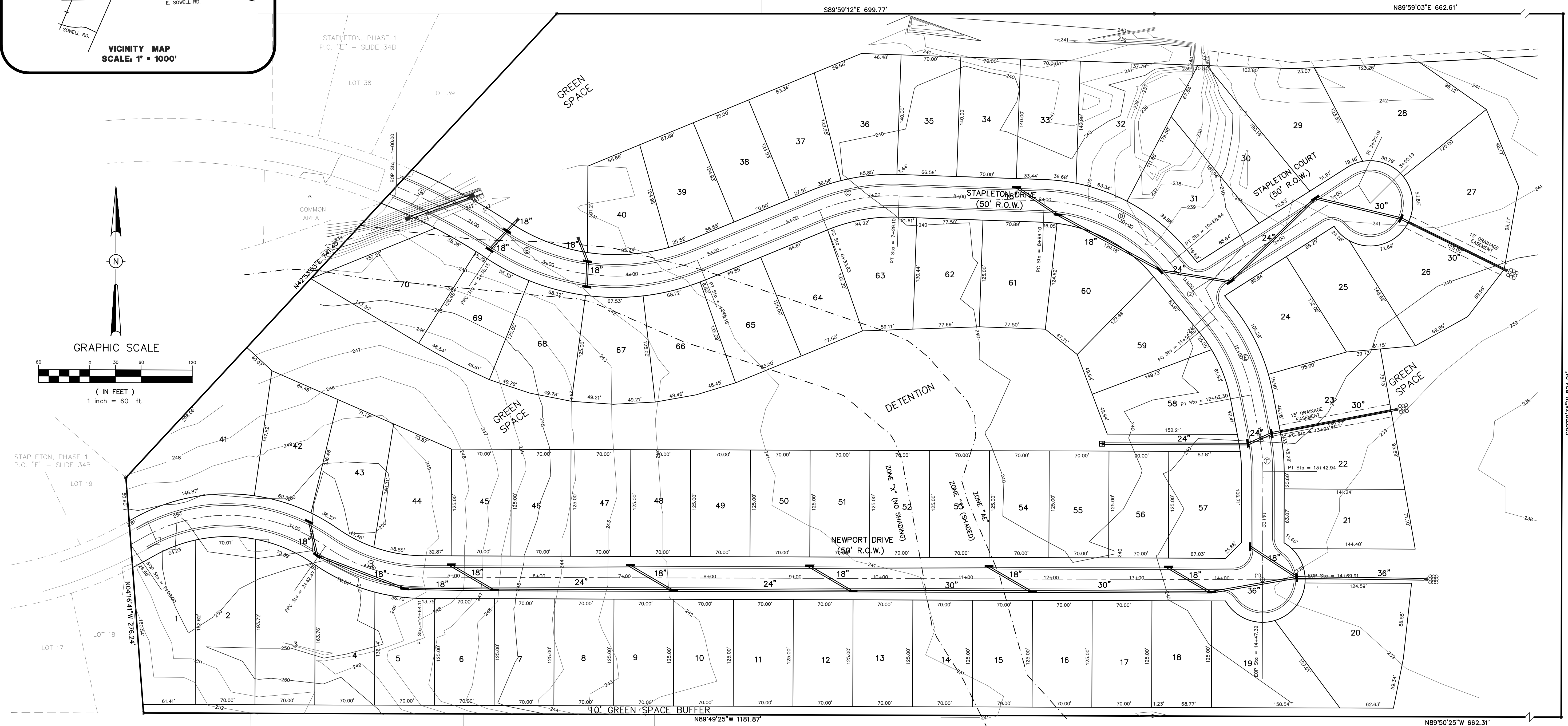
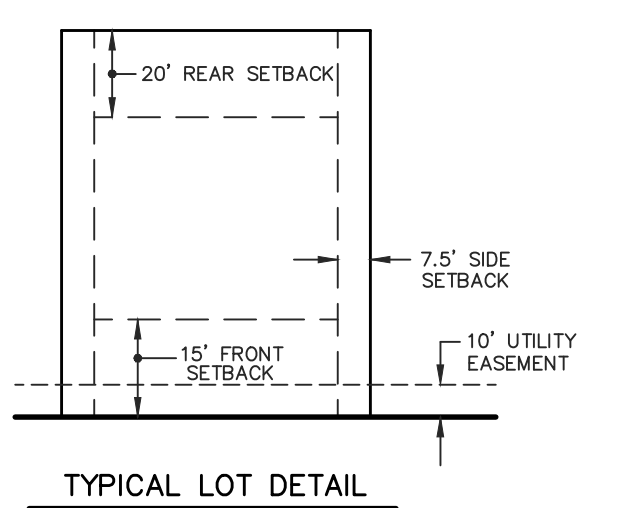
Re: Reapproval of Preliminary Plat
The Lakes at Stapleton

The Engineering Department requests that the Board reapprove the preliminary plat for the above referenced subdivision. It was originally approved by the Board on April 5, 2021. According to section 201.08 of the Subdivision Regulations, construction of the subdivision must commence within 1 year of the approval of the preliminary plat or the preliminary plat and construction plans must be resubmitted for approval.



CENTERLINE CURVE DATA

Ⓐ Δ = 105°14'47"	Ⓑ Δ = 55°41'41"	Ⓒ Δ = 24°16'37"	Ⓓ Δ = 48°34'01"
D = 7.978800'	D = 25.94831'	D = 25.44450'	D = 25.44789'
R = 718.10'	R = 250.00'	R = 225.00'	R = 200.00'
L = 136.15'	L = 243.01'	L = 95.47'	L = 169.54'
Ⓔ Δ = 28°33'39"	Ⓕ Δ = 11°02'19"	Ⓖ Δ = 65°06'39"	Ⓗ Δ = 34°50'50"
D = 28.64789'	D = 28.64789'	D = 28.64789'	D = 28.64789'
R = 200.00'	R = 200.00'	R = 200.00'	R = 200.00'
L = 99.70'	L = 38.53'	L = 227.28'	L = 121.64'



DEVELOPER
SCOTT MAY
1940 FLORENCE-BYRAM ROAD
FLORENCE MISSISSIPPI 39073

- NOTES:**
- THIS SUBDIVISION LIES WITHIN THE LIMITS ESTABLISHED FOR ZONES "AE", "X" (SHADED AND NO SHADING) ACCORDING TO FIRM MAP NUMBERS 28089C0415 F AND 28089C0420 F, EFFECTIVE MARCH 17, 2010.
 - DIMENSIONS ALONG CURVES ARE CHORD DISTANCES.
 - AREA = 27.55 ACRES +/-, MORE OR LESS.
 - CONCRETE MONUMENTS WILL BE PLACED AT ALL CORNERS OF THE SUBDIVISION POST-CONSTRUCTION.
 - COMMON AREAS AND EASEMENTS SHALL BE MAINTAINED BY THE HOME OWNERS ASSN. OR ADJACENT LOT OWNER, WHICHEVER IS APPLICABLE AS OUTLINED IN THE COVENANTS.
 - DATE OF FIELD SURVEY: 11-19-18
 - CONTOURS SHOWN ARE FROM A FIELD TOPOGRAPHIC SURVEY AND MSL. (NAVD 88 DATUM).
 - SEWER AND WATER TO BE PROVIDED BY BEAR CREEK WATER ASSN.

DRAWING NO. TRCT-B-5

H D LANG AND ASSOCIATES, INC.
POST OFFICE BOX 16085
JACKSON, MISSISSIPPI 39236
601-362-4886

PROJECT
PRELIMINARY PLAT
OF
THE LAKES AT STAPLETON

LOCATION
SITUATED IN THE
NORTHEAST 1/4 OF SECTION 14,
TOWNSHIP 8 NORTH - RANGE 2 EAST
MADISON COUNTY, MISSISSIPPI

DATE	REVISION	BY	DRAWN BY: D.L.M.
			DATE: 03-07-24
			SCALE: 1" = 60'
			BOOK: PAGE:
			PROJECT NO.: 17-047